



Left to right: Simon West, Maine State Chamber; Katherine Harvey, AYCC; Representative Bruce White; Gov. Janet Mills; Kimberly N. Lindlof President and CEO, Mid-Maine Chamber of Commerce; Senator David LaFountain.

Signing LD 147 means Maine charitable organizations will be allowed a substantial increase in the amount of money allowed to be raised by raffles

We did it! Mid-Maine Chamber worked with Senator David Lafountain and MMCC-area state legislators to propose legislation, LD 147, "An Act to Increase the Amount of Money Allowed to be Raised for a Charitable Purpose By Certain Raffles." MMCC along with other Chambers in the State, the Shriners, and the AYCC, wanted this legislation to pass so that we could increase the gross total amount of value for the Festival of Trees. Currently, the total of the actual trees plus all of the decorations and gifts below the tree could not exceed \$75,000. LD 147 proposed increasing that limit to

\$125,000. We asked for this increase because we were having to limit the value of participating trees, and quite frankly, our members are generous and wanted to give more. This legislation came before the Veteran and Legal Affairs Committee in late January and received support by those organizations listed above, plus the Maine State Chamber. There was no testimony in opposition of the proposed legislation. In fact, the Veteran and Legal Affairs Committee increased the request to \$150,000 effectively doubling it! Because there was a revision from \$125k to \$150k it took a little bit longer to

come out of the revisor's office, but once it hit the floor of the house and senate, it passed pretty easily.

We are so grateful to the members of the Veteran and Legal Affairs Committee, our local legislators who spread the word about the positive impact that this could have for nonprofits who are being limited with how much they could do, and specifically to Sen. Lafountain (and his office team) for his leadership in getting the ball rolling. Above is a photo of Gov. Janet Mills signing LD 147 into law on July 25 in her conference room at the Statehouse.

50 ELM STREET, WATERTVILLE, ME 04901
TEL: (207) 873-3315 • FAX: (207) 877-0087
bridget@midmainechamber.com
www.midmainechamber.com
Michelle Joler-Labbe, chair of the board
Kimberly N. Lindlof, president & CEO

WHAT'S INSIDE:

People News | Member News | Events Calendar | New Members
Events: Super Raffle | Leadership Luncheon | Business Breakfast

Member Spotlight: Camden National Bank

SUPER RAFFLE DINNER – SEPTEMBER 28TH



The Mid Maine Chamber of Commerce is happy to announce the 2023 Super Raffle Dinner will be proudly sponsored for the third year by Maine State Credit Union. This year's theme will be **A Night in**

Paris, complete with food choices and decorations that will be sure to set the mood. For the first time ever – the Winslow VFW on Dunbar Road in Winslow will be the hosting venue on Thursday, Sept. 28.

We are so pleased to have Lori Dumont from The Parsonage House and Cheri Savage from the Heritage House catering the event again this year. Last year this culinary duo knocked it out of the park with their theme- inspired appetizers, and desserts.

Now let's talk about prizes and winning – it's so easy because everyone is a winner! Each person that purchases a ticket receives dinner for two and a prize, ranging from \$25 gifts or certificates to \$500, \$750, \$1500, and \$3000 in Cash Prizes. There will be a 50/50 (which in years past has exceeded \$1K). Day's Jewelers donates a beautiful piece of jewelry for our Sparkle Drawing – assuring that you have a chance to surprise your special someone. There's also a 2nd Chance Cash prize drawing, which is sponsored by Choice Wealth Advisors – and YES, you could win twice! This means that if your ticket is pulled before the top prizes of \$500 or more are drawn, you are entered into a second chance drawing to win \$500 in cash! We will have a great game brought to you by Central Maine Motors to enjoy as well, while providing additional excitement for the evening.

To make the evening move along smoothly and efficiently with more time to network and socialize, the chamber will pre-draw 100 tickets and video the selections for everyone to view during and after the evening. The question will be when you find out what you have won? You will have to wait as the evening progresses. In the meantime, relax and have some fun at your table with your friends, neigh-



bors and co-workers.

Tickets are NOW ON SALE for \$125 each and can be purchased at the Chamber office. We are also looking for raffle prizes - If you would like to donate one, please contact Cindy Stevens at Cindy@midmainechamber.com

It's a night to win prizes, have a beautiful dinner, network, and socialize. We can't wait to see everyone SEPTEMBER 28, 2023, at our A Night in Paris-themed Super Raffle Dinner at Winslow VFW. Social hour is 5:00 to 6:30, prize drawings follow.

Thank you to our major sponsor, Maine State Credit Union, and Social Hour Sponsor Bar Harbor Bank and Trust; Video Sponsor Bowman Con-

structors; Entertainment Sponsor Central Maine Motors; 2nd Chance Cash Prize Sponsor Choice Wealth Advisors; Jewelry Sparkle Sponsor Day's Jewelers.

Please visit www.midmainechamber.com/cms/super-raffle-dinner/ for upcoming details.

Best – Linanne Gaunce, Mid-Maine Chamber Board Member & Co – Chair Super Raffle Dinner Committee

September Mid-Maine Chamber Calendar

| | | |
|-----------------|------------|----------------------------------|
| Wed., Sept. 6 | 7:30 a.m. | Public Policy |
| Mon., Sept. 11 | 8:30 a.m. | KV Connect Steering Committee |
| Thurs. Sept. 14 | 7:15 a.m. | Business Breakfast Series |
| Wed., Sept. 20 | 12:30 p.m. | Executive Committee |
| Wed. Sept. 20 | 5:30 pm. | Business After Hours-Elks Lodge |
| Wed., Sept. 27 | 7:30 a.m. | Marketing & Membership Committee |
| Thurs. Sept. 28 | 5:00 p.m. | Super Raffle Dinner |
| Thurs., Oct. 6 | 8:00 a.m. | Board of Directors' |

KSW Mobile EVER WHERE YOU GO, WE ARE TOO!
KSWFCU.ORG

Locations in:
Waterville & Belfast

Phone: 1-207-872-5602

Apple Pay Google Pay

SBS Carbon Copy

Printing • Copying • Mailing

54 Main Street, Waterville, ME 04901
207-873-7947
www.maineprintingservices.com

Oak Grove Center
Genesis HealthCare™

27 Cool Street • Waterville, ME 04901
 (207) 873-0721 • Fax (207) 877-2287
www.geneshcc.com
 Rehabilitation and Living Centers

John Butera
 VP Commercial Banker
 207.858.2555
jbutera@skowhegansavings.com

"John Butera assisted us with navigating the Paycheck Protection Program. He is quick to return our calls and takes a personal interest in our business."
 - John Goodine, Elm City Photo

I'm here for your business banking needs.



Welcome New Members

3D Equipment

Devon Meservie
280 Waterville Rd., Norridgewock
devon@3dequipment.com
www.3dequipment.com

Bon Appetit Management Company

5460 Mayflower Hill, Waterville
Richard Frost, 207-859-5464
rfrost@colby.edu

Baking with Danielle

33 Temple St., Waterville
(207) 877-4902
info@BakingWithDanielle.com
bakingwithdanielle.com

Cianbro Corporation

Brendan Scully, Project Manager
PO Box 1000, Pittsfield
207-416-2688
bscully@cianbro.com
www.cianbro.com

GB Chronic Solutions

Peter Boulette, 207-859-0682
gbchronicsolutions@gmail.com

Heavenly Spa and Cosmetic Ink

Tammy Pollard
79 Main St., Fairfield
207-238-0114
info@heavenlyspame.com

M & M Ice Cream

Michael Pelletier
845 Waterville Rd., Skowhegan
207-399-6532
mandmicecream@gmail.com

Performance Consulting Services, LLC

779 Manchester Rd., Belgrade
207-987-0726
Emily@performanceconsultingservicesllc.com

ReMaine Humble Farms

Jonathan Graulich
746 Augusta Rd., Winslow
207-509-0123
remainehumblefarms@gmail.com
remainehumblefarms.com

SMK Donuts DBA Dunkin

Colleen Bailey, 207-653-4073
Norridgewock and Unity
Bailey.colleen@gmail.com

Trailside Performance

Harlan Michaud
797 Augusta Rd., Winslow
207-232-0568
Trailsideperformance@roadrunner.com
nhmgroup@outlook.com
www.trailsideperforms.com

Rebekah Wheeler Photography & Design

Rebekah Wheeler
10 Pinehurst St., Augusta
207-318-0421
hello@rebekahwheeler.com
www.rebekahwheeler.com

Waterville Police and Fire have a portal where businesses can put in an emergency contact should first responders need to reach someone during off hours.
<https://www.waterville-me.gov/fire/emergency-contact>

**CHAMBER ENERGY
SOLAR OFFSET
15 TREES SAVED IN AUGUST**

CHAMBER BOARDROOM RENTAL

Includes Coffee Service

4 hours (1/2 day) –

Member Rate: \$75

Non-Member Rate: \$105

Full Day –

Member Rate: \$125

Non-Member Rate: \$155

Call Debbie at 873-3315 to book!



Food and companionship
enriching life

www.elanco.com



Serving Maine Since 1947

**Sheridan
Construction**

Building on our promise
WWW.SHERIDANCORP.COM

Engineering
Design - Build
General Contracting
Construction Management

33 Sheridan Drive
Fairfield, Maine 04937
(207)453-9311

WATERVILLE WORKS



Brought to you by Mid-Maine Chamber of Commerce

For current updates
and information on the
Waterville Winslow
Ticonic Bridge project visit

[www.maine.gov/mdot/projects/
waterville/ticonicbridge](http://www.maine.gov/mdot/projects/waterville/ticonicbridge)



Mid-Maine Chamber of Commerce
is proud to maintain an A+ rating
with the Better Business Bureau.



WAVE

Waterville Area Ventures

Supporting businesses
from idea through
accelerated growth as
Maine's first
entrepreneurial
ecosystem

watervilleareaventures.org

IN PARTNERSHIP WITH



THOMAS

Harold Alfond, Institute for Business Innovation



DIRIGO LABS



Calendar of Events

Every Monday, 1 to 4 p.m. Career Help at the Library. A consultant from the CareerCenter will be at the **Waterville Public Library** every Monday to assist with your job search needs. FMI: librarian@watervillelibrary.org or call 207-872-5433.

Tuesdays, 2:30 - 4 p.m., Crafternoons, Waterville Public Library, 73 Elm St, Waterville. Come to the Children's Room to make the craft with help from library staff! FMI: Call 207-872-5433, or email librarian@watervillelibrary.org, or go to www.watervillelibrary.org or www.facebook.com/watervillelibrary

Wednesdays, 2-3:30 p.m., Waterville Chess Club meets to play at the **Muskie Community Center**. Chessboards provided. To register call 207-873-4745 or visit 38 Gold St., Waterville.

Thursdays, 7 - 7:30 p.m. Book Bites! (Facebook Read-A-Loud) Waterville Public Library Each week Mrs. Liz will read an excerpt from one book off of the New Chapter Books shelves. See the video on FMI: Call 207-872-5433, or email librarian@watervillelibrary.org, or go to watervillelibrary.org or facebook.com/watervillelibrary

Thursdays thru November, 2-6 p.m., Waterville Farmers' Market, Head of Falls, downtown Waterville. FMI: watervillefarmersmarket.org

Fri. Sept 1, 2, 8, 9 at 7:30 p.m., Sept 3, 10 at 2 p.m. Waterville Creates and the Waterville Opera House presents **Agatha Christie's Murder on the Orient Express**. FMI: operahouse.org or 873-7000.

Fri. Sept. 1, Celebrate First Friday in Downtown Waterville, Main St. Waterville, Waterville Creates' First Fridays celebrate the vibrant creativity in Waterville through a wide array of arts experiences. On the first Friday of every month, visit Main Street in downtown Waterville to meet artists, see performances, listen to live music, eat delicious food, shop at local businesses, enjoy the arts, and come together as a community. FMI: watervillecreates.org.

Sun. Sept. 3, 10 a.m.—3 p.m. Knock Summer Out of the Park! Join AYCC on Labor Day weekend at Mini Fenway for a day of baseball, softball, and fun! FMI: contact Landon Knittweis at lknittweis@clubaycc.org (Adult Division) or Beth LaFountain at blafountain@clubaycc.org (Dinger Division).

Sun. Sept. 3 - Join the Town of Norridgewock for its 50th annual Oosoola Days celebration! FMI: Oosoola Days 2023 Facebook page.

Sat. Sept. 9, 8 p.m., Snow Pond Center for the Arts presents Enter the Haggis. FMI: snowpond.org

Tues., Sept. 12, 5:30-7 p.m. NDFCU, 94 Silver St., Waterville. Informational session with guest speaker Nicole Savage from CUSO Home Lending. FMI: cmorgan@newdimensionsfcu.com

Wed., Sept. 13, 7:45 a.m., Breakfast meeting, The Hidden Roles of HR, presented by Ted Helberg. **Best Western,** 375 Main Street, Waterville or Virtual via Zoom. Ted will explore the traditional roles of Human Resources and offer alternatives to those traditional roles. FMI: kvhra.shrm.org/events/2023/09/september-meeting-hidden-roles

Wed. Sept. 13, 2-7 p.m. REM (Revitalizing the Energy in ME) and **Colby College's** Office of Civic Engagement are co-sponsoring the REM Volunteer Fair. FMI: 873-4444 or email faye@rem1.org.

Thurs. Sept. 14: 7:15 a.m. Business Breakfast. Building Brand Loyalty—Session 11. FMI: cindy@midmainechamber.com or 873-3315.

Fri. Sept 15, 6 p.m. Children's Discovery Museum invites you to Get Your Laugh On, comedy show with Capital City Improv and auction. Hors d'oeuvres and cash bar by **Rita's Catering**. FMI: amarinda@childrensdiscovermusuem.org.

Sat. Sept. 16 Snow Pond Center for the Arts presents **Snow Pond On Tap**. VIP 1:30 p.m., General admission 3 p.m. FMI: snowpond.org.

Tues. Sept. 19, 7:30 p.m. Waterville Creates and the Waterville Opera House presents **Ani Difranco**. FMI: operahouse.org or 873-7000.

Fri. Sept. 22, 8-9:30 a.m. Suicide Prevention Awareness Training provided by NAMI Maine presented by **KV Connect**. Mid-Maine Chamber conference room. FMI: To register go to eventbrite.com or 873-3315.

Fri. Sept. 22, 6 p.m. United Way of Kennebec's Valley presents the 2023 Movie in the Park, **Disney's SOUL**, at Head of Falls Waterville. Free, family-friendly event. Concessions for sale. This is a fundraising event that will raise money to support UWKV's 58 nonprofit and school-based programs.

Fri. & Sat., Sept. 22 & 23. Mount Merici, 36th Annual Community Harvest Fair. FMI: mountmerici.org.

Sat., Sept. 23, 6 – 10 p.m., Woodfords 2023 Auction Gala, Sheraton Sable Oaks in South Portland. FMI: woodfords.org/auction-tickets/

Sat., Sept. 30, 5:30 p.m. Paint The Town Purple Gala, presented by **Family Violence Project**. Augusta Elks Lodge, 397 Civic Center Drive, Augusta. Attendees are encouraged to wear semi-formal/formal attire in purple, but it is not required. FMI: Nathan Macdonald, nmacdonald@familyviolenceproject.org or 623-8637 x319.

Share Your Events!

Log in to your chamber account and add events, member news, post jobs!

Not sure what your log in is, email deborah@midmainechamber.com



The Advantages of Membership

- Low Rate Loans
- Free Checking
- Mobile Banking
- Debit Card Rewards

Connected
credit union

connectedcreditunion.org
85 Civic Center Drive, Augusta
12 Monument Street, Winslow



CENTURY 21
Nason Realty, Inc.

Residential • Seasonal • Commer- 11 Bay St., Winslow,

www.c21nason.com Don't settle for average.
207-873-2119
Each Office Independently Owned & Operated



uf

Supporting the Waterville arts, culture and business community.

UNITY FOUNDATION



Downtown Waterville

Come visit us!
Every Thursday
May - November
2-6 p.m.
Rain or Shine
Riverwalk
Head of Falls
Downtown
Waterville

[downtownwatervillefm](https://www.facebook.com/downtownwatervillefm)
[watervillefarmersmarket.org](http://www.watervillefarmersmarket.org)

FARMERS' MARKET

Member News

Moody Automotive LLC leased 2,500 square feet of industrial space at 81 Armory Rd. recently. Welcome to Waterville!

John T. Gorman Foundation has awarded 83 grants totaling \$1.5M to provide food, housing, shelter, health care and other essential services to Mainers in need through its '23 Direct Services Grant Program. Full descriptions of the grants, including counties served, are available at www.jtgfoundation.org. In MMCC's region, the following received grants:

- First Congregational Church of Waterville/Waterville Area Essentials Closet — \$15k
- **Mid-Maine Homeless Shelter** - \$25k
- **SKILLS Inc.** - \$25k
- **Waterville Area Soup Kitchen** - \$15k
- Winslow Community Cupboard/Winslow Congregational Church, UCC - \$15k

Maine State Chamber of Commerce announces the 134 Best Places to Work in Maine. Of those, our members are as follows:

| | |
|--------------------------------------|-----------------------------------|
| Sm. employers (15-49 emp.): | Skowhegan Savings Bank |
| Maine Technology Group | Lg. employers (250+ emp.): |
| Medium employers (50-249 emp.): | Bangor Savings Bank |
| Allen Insurance and Financial | Camden National Bank |
| Day's Jewelers | Central Maine Power |
| Eaton Peabody | Cianbro |
| Maine State Credit Union | Edward Jones |
| Moody's Coworker Owned Inc. | Hammond Lumber Co. |
| Renewal by Andersen Greater | Kennebec Behavioral Health |
| Maine | Summit Utilities Inc. |
| Sheridan Construction | TD Bank NA |
| Skills Inc. | |

JMG announces that it recently received a \$10k donation from **Bangor Savings Bank**!

Kennebec Valley Community College is launching athletics: cross country and golf teams this fall, and track and field in the spring.

Summit Natural Gas of Maine, a subsidiary of Summit Utilities Inc., announced it is giving \$60k in grant donations to 5 area nonprofits. Each nonprofit will receive the \$4,000 grant in '23, '24, and '25. Of those awarded, our own **Alfond Boys and Girls Club** in Waterville will receive a grant.

United Way of Kennebec Valley (UWKV) raised \$21,883 to support community programming at its 53rd Annual Golf Scramble. Proceeds will support its annual campaign, which funds 58 nonprofit and school-based programs across Kennebec County.

GHM Agency is changing its name to **Allen Insurance and Financial**. GHM has been a part of Allen since late 2021. Everyone at **Allen** takes great pride in **GHMs** 100+ year history in Waterville, and at **Allen Insurance and Financial** it is all looking forward to maintaining the tradition. It is a 100% employee-owned company, which means when you call us you are speaking with an owner every time – someone who is 100% dedicated to doing their very best to help you navigate the complex world of insurance and financial services.

Share Your News!
bridget@midmainechamber.com

UPCOMING RIBBON CUTTINGS

Thursday, September 7 at 1:30 p.m.
Kennebec Water District
 131 Drummond Ave., Waterville



SEPTMBER '23 SPEAKER SERIES:
THE GOOD CRUST:
NOURISHING COMMUNITIES WITH
LOCALLY SOURCED GRAINS
HEATHER KERNER, FOUNDER
Thursday, September 14 | 5:30 - 6:30 p.m.
 Kennebec Valley Community College
 Harold Alfond Campus, Woodlee Hall
 677 Skowhegan Rd., Fairfield, ME





This event is Free, thanks to the Harold Alfond Institute for Business Innovation (at Thomas College)
 Join The Good Crust Founder Heather Kerner as she discusses how The Good Crust is on a mission to revive Maine's grain economy by supporting farmers and millers, stewarding investment in local ingredients and inclusive workforce development.

Sponsored by:  To register, and FMI: www.centralmaine.org.
 Beverage Sponsor: 

Sponsorships are available in our InTouch Newsletter — a great place to showcase your business.

Small block (2.5" wide by 1.25" tall):
\$495/year

Large block (2.5" wide by 2.5" tall):
\$645/year

If interested contact
bridget@midmainechamber.com



6 Jefferson St., Waterville ME
 (207) 873-6228

f in

KNOWLESMECHANICAL.COM
 (207) 445-4092



KNOWLES MECHANICAL INC.

Commercial & Residential
Plumbing * Heating * Ventilation
A/C * Refrigeration * Core Boring
Metal Fab * Sales and Service
Installs, Maintenance and
24 Hour Energy Service

Leadership Luncheon



An Event Series of MMCC



September 6
11:30 to 1 p.m.
Amici's Cucina,
137 Main Street
Waterville
Tricia Costigan – Senior VP of Northern Light Health, President of Northern Light Inland Hospital and Northern Light Continuing Care, Lakewood

Tricia will share insights into all that is happening at Northern Light and her challenges and successes along the way to her current position. Registration- \$25 for members; \$30 non-members and at the door. Register today by emailing cindy@midmainechamber.com or call the chamber at 873-3315.

Business Breakfast



An Event Series of MMCC

Thursday, September 14, 7:15-9 a.m.
Best Western Plus,
375 Main St., Waterville
Building Brand Loyalty Session II:

Trampoline Advertising Managing Partners Paula and Derek Slayton will discuss marketing benchmarks and tactics to determine the audience tuning in to your message and responding. More in-depth Google Analytics follow up and tactics will show the benefits of tracking feedback, emphasizing what's working and adjusting what isn't for your organization.



Register today by emailing cindy@midmainechamber.com or call the chamber at 873-3315.

People News

This September, **HealthReach** staff in Albion, Belgrade, Coopers Mills, and Richmond are happy to welcome Dr. Daniel J. Keane, Podiatrist, to its team.

Connie Coggins, President & CEO of **HealthReach Community Health Centers**, is pleased to join the HealthReach Governing Board of Directors in welcoming its newest volunteer member, Shirley Lataille.

KFS Mortgage Co. LLC, a Waterville-based lender, has named a new director of mortgage production. Sabrina Johnson will be responsible for expanding product options and leading the underwriting and production team. Nice to meet you!

Coldwell Banker Plourde Real Estate would like to welcome Adrian Sincyr to its team.

Camden National Corporation appoints Simon Griffiths as the successor to current President and Chief Executive Officer, Gregory Dufour, effective December 31, 2023.

Northern Light Inland Hospital has welcomed Dr. Brian Abbott, DO, to Northern Light Orthopedics in Waterville, located in the Medical Arts Building attached to the hospital.

Dirigo Labs is pleased to announce the appointment of Jonathan Godbout, Co-founder of Prospector, as its next entrepreneur in residence. Jonathan will advise Dirigo Labs startups and entrepreneurs as they progress through the accelerator program.



Business After Hours

Wednesday
September 20th
5:30-7 p.m.
Hosted by
Waterville Elks #905
76 Industrial Rd.,
Waterville

An Event Series of MMCC

Join MMCC and friends for a Business After Hours. This event offers a great opportunity to mix and mingle with other business professionals. We will also be offering the mic to members who want to speak and let us know what your business has been doing. Bring plenty of business cards!

VIDEO PRODUCTION SERVICES



Services Include

Broadcasting, Livestreams, Product or Business Promotions
+HYBRID LIVESTREAM WITH ZOOM INTERFACE+
Interviews, Special Announcements, Instructional Videos

crossroads-tv.com



753 West River Rd.
PO Box 59
Waterville, ME 04903-0059
roland@primefinancial.biz
Phone (207) 877-9450
(800) 877-9450
Fax (207) 877-8876

Roland Fournier
CERTIFIED FINANCIAL PLANNER™ PROFESSIONAL
ChFC, CLU, CMFC, MSFS, CASL, REBC

Securities and Advisory Services offered through LPL Financial, a registered Investment Advisor

Member **FINRA/SIPC**
CFPs Professional, ChFC, CLU, CMFC, MSFS, CASL, REBC

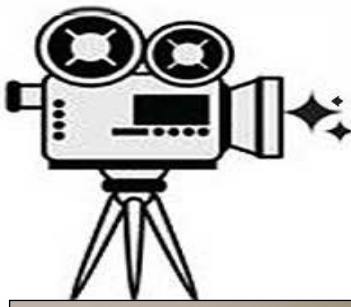


Experience IT Differently!



- CLOUD SOLUTIONS
- BUSINESS SOLUTIONS
- MANAGED IT SERVICES
- CARRIER SERVICES

120 Augusta Rd • Winslow, ME
(207) 692-0955
www.mainetechgroup.com



Chamber Chatter

Did you know that one of your Chamber Member benefits is the ability to have a Chamber Chatter segment filmed right at your business?

These videos are shared out on Facebook and receive hundreds of views.

Grow your brand and get some great exposure. Share your business story, special events information and more.

Interviews are conducted by our Chamber host, Meryia Michaud, and are approximately 5 minutes in length. No need to worry, we also have the ability to make edits.

If you would like to get on the schedule, please reach out to Kimberly@midmainechamber.com.

Thank you Chamber Chatter Sponsors:
Aroma Joe's & Maine Technology Group



Yoga in the Park

5:00 PM at Head of Falls, Waterville ME
Sept 21st | Oct 26th

Brought to you by:

OUTDOOR RECREATION
KV CONNECT

SOULREVIVAL
yoga | barre | wellness

WE HAVE BETTER LIVING IN MID-MAINE GUIDEBOOKS!

COME AND GET SOME FOR YOUR LOBBY, OFFICE, OR ESTABLISHMENT!
GREAT FOR: RECRUITING PURPOSES, VISITORS, FRIENDS AND FAMILY!!

KENNEBEC VALLEY COMMUNITY COLLEGE
YOUR BRIDGE TO A BRIGHTER FUTURE

For more information visit kvcc.me.edu

NEW LOOK — SAME GREAT EDUCATION

ADVANCE 1
CLEANING & DISASTER RESTORATION

Office Cleaning
Customized to Meet Your Needs!
Daily, Weekly, Or Monthly

- Window Washing
- Dusting
- Bathroom Cleaning
- Vacuuming
- Sweeping / Mopping Floors

207-873-1241 ~ www.advance1clean.com

SILVER STREET Tavern

2 Silver Street, Waterville ME

Sponsorships are available in our InTouch Newsletter — a great place to showcase your business.

Small block (2.5" wide by 1.25" tall):
\$495/year

Large block (2.5" wide by 2.5" tall):
\$645/year

If interested contact bridget@midmainechamber.com

Member Spotlight: Camden National Bank

Starting a new business can be exciting and—understandably—a bit daunting. There are several important steps (such as registering your business with the state, gathering a tax ID, and filing to become an LLC or corporation) that are critical to the process. However, before you launch into those start-up items, we recommend entrepreneurs begin by formulating a solid business plan.

While developing your business plan, you'll better understand your objectives and strategies, and how your unique offering fits into the marketplace. Plus, you'll be in a stronger position to assess the feasibility of your idea *before* you begin investing time and money into it.

Here are three key things to focus on when building out a business plan:

Answer critical questions. A business plan requires you to address tough questions, like *how* you'll market your product or service, *who* you'll market to, *where* you'll focus your sales efforts, *what* your prices will be, and more. You'll be able to identify concrete areas of strength and any potential shortfalls. Once you've determined your various business strategies, it's important to organize your plan into sections, including operations, products and services, and marketing.

Look ahead. Most business plans include three-to-five-year projections outlining goals and the revenue growth plan. Factoring future growth into your business plan can be an effective way to account for changes in the market, understand staffing needs, and anticipate required funding. Be sure to include the proposed loan or funding you are requesting to show that the business can take on that new debt, and how the funding will be utilized. This will help financial institutions or business partners feel confident that they will see a return on their investment.



Tap into local expertise. Having a mentor or coach can be an enormous asset when putting together your business plan. There are several agencies you can work with—including your local Small Business Administration office, SCORE business mentors, or Women's Business Center—to help you formulate and review your plan. These mentors can provide real-world advice on your strategy, objectives, projections, and funding sources.

At Camden National Bank, their Business Banking Team supports companies of all shapes and sizes within our footprint. They have expertise in the business planning process, and would be more than happy to connect you with additional local resources to ensure your success.

CamdenNational.bank
Call 24/7: 800-860-8821
Member FDIC | Equal Housing Lender



PHARMACY
SAVAGES DRUG

FAIRFIELD PHARMACY (207)413-4411
OAKLAND PHARMACY (207)861-4448
UNITY PHARMACY (207)749-0700



BUDDIES GROCERIES
IGA
207-465-2621
43 Main Street • Oakland
SavagesDrug.com

Workplace Health MaineGeneral Medical Center

- Injury treatment & management
- Employee wellness
- Drug & alcohol testing
- DOT physicals

Augusta — 621-7550 Waterville — 872-4260

Visit us at workplacehealth.maine-general.org.



Quality and Value Since 1912
www.hamelinfurniturecompany.com

Hamelin Furniture Co.
CORNER WESTERN AVE. & SOUTH ST. WATERVILLE, MAINE
872-8433



KENNEBEC VALLEY
COMMUNITY COLLEGE

YOUR BRIDGE TO A BRIGHTER FUTURE

Jazz Gala

JOIN US ON BOURBON STREET

Featuring the finest local jazz talents
Spectacular New Orleans cuisine from local eateries and delicious desserts
Coveted Auction Items
Dollars for Scholars Finale

TO BENEFIT THE CREATION OF A SPORTS COMPLEX
AND STUDENT SCHOLARSHIPS

Kennebec Room - Carter Hall
Fairfield Campus

\$50 PER PERSON

\$400 PER TABLE



20
OCT

Kindly call Jennifer Swafford at
(207)453-5020 or
www.kvcc.me.edu/foundation/gala/

6
PM



JOIN OUR BOARD OF DIRECTORS!

The Humane Society Waterville Area has three open seats on its volunteer Board of Directors. We are seeking volunteers with experience in Regulatory/Legal, Human Resources, and Nonprofit Fund Raising. This is a great opportunity to make a positive impact to the health and wellbeing of animals in the greater Waterville area.

INTERESTED?

Please send a letter of interest and resume to the attention of:
Mark Chapman, Vice President
Board of Directors at
mchapman@hswa.org.

100 Webb Rd. Waterville
207-873-2430





Educate. Empower. Evolve.

Looking for a new Manufactured Home Loan?

Fixed Rate as low as

7.78% APR*
Up to 10 Years

**Did you know that
manufactured homes
offer homeowners
more customization
and energy efficiency
options than you might
believe?**

**Other terms and
rates available!**

Waterville • Winslow • Skowhegan
newdimensionsfcu.com
(800) 326-6190



***Annual Percentage Rate; Purchase or refinance a new manufactured home, single or double wide, located in a community or leased land. Up to 90% loan to value. Payment \$12.00 per thousand borrowed. Taxes/Insurance not included. Membership eligibility required. Subject to underwriting guidelines. Certain restrictions apply. Some fees apply. Other rates and terms also available for used manufactured homes. Call for details.**

Fuel Loan Special

7.75% APR*

Up to 12 months

This is a great way to plan financially for the upcoming winter while your oil/propane company is rolling out its budget plans and pre-buy offers.

Fuel loan can be for oil, propane, pellets, or even firewood)

Waterville • Winslow • Skowhegan
newdimensionsfcu.com
(800) 326-6190

*Annual Percentage Rate; Rate subject to change without notice; membership eligibility required. Payment \$20.16 per \$1,000 borrowed. Subject to underwriting guidelines. Certain restrictions apply. Federally Insured by NCUA



Tricia Costigan – Northern Light

Leadership Luncheon

**Wednesday, September 6 –
11:30 a.m. to 1 p.m.**

Amici's Cucina, Main St., Waterville

Join us for a delicious lunch and presentation with Tricia Costigan, Senior VP of Northern Light Health, President of Northern Light Inland Hospital and Northern Light Continuing Care, Lakewood.

Tricia will share insights into all that is happening at Northern Light and her challenges and successes along the way to her current position.

Register today! \$25 for Chamber members;

\$30 for non-members or at the door.

Registration includes lunch.

Thank you to our 2023 Leadership Luncheon Sponsors:



Business Breakfast Series

brought to you by
Mid-Maine Chamber of Commerce



TOPIC: Building Brand Loyalty and Discovering Your Audience (Session II)



Paula Slayton -
Managing Partner
Trampoline

When: Thursday, September 14,
7:15 - 9:00 a.m.

Where: Best Western Plus,
375 Main St., Waterville

Join the Mid-Maine Chamber for an engaging business presentation with Trampoline Advertising Managing Partner Paula Slayton and Creative Director Derek Slayton as they discuss marketing benchmarks and tactics to determine the audience tuning in to your message and responding.



Derek Slayton
Creative Director
Trampoline

This month's breakfast will be Session II of a 2-Part presentation, begun in May.

Paula and Derek will cover more in-depth Google Analytics follow up and tactics that will show the benefits of tracking feedback, emphasizing what's working and adjusting what isn't for your organization.

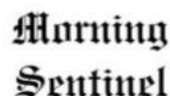
Please come prepared with your questions and take this opportunity to network with other business leaders.

Check out our September spotlights booth:



Pre-register today: cost per person: \$23 members; \$29 at the door and non-members. TO REGISTER: www.midmainechamber.com or 873-3315.

Thank you to our Annual Major Sponsors:



Print Media Sponsor



Radio Sponsor



Video Sponsor



PRESENTS THE 2023

SUPER RAFFLE DINNER

A Night in Paris

THURSDAY, SEPTEMBER 28TH
WINSLOW VFW | 175 VETERAN DRIVE, WINSLOW
5 PM SOCIAL HOUR | 6:30 PM DRAWING BEGINS



Your "City of Lights" experience awaits during Super Raffle "A Night in Paris!" Tickets are \$125, including dinner for two and a prize. Food will be provided by the Heritage House.

A cash bar will also be available. Games and cash prizes - will make it the romantic "getaway" of your dreams! Tickets are on sale now—reserve your table today by calling 207-873-3315 or emailing Cindy@MidMaineChamber.com.

SPONSORED BY





SAVE THE DATE

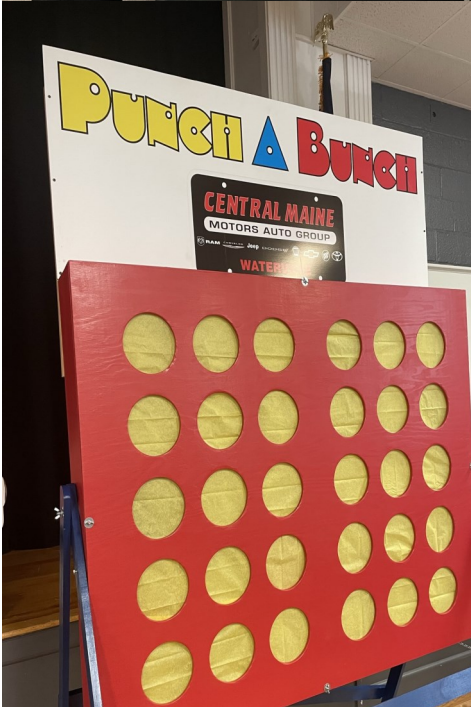
Mid-Maine Chamber SUPER RAFFLE DINNER

SEPTEMBER 28, 2023

WINSLOW VFW
175 VETERANS DRIVE
WINSLOW

PROUDLY SPONSORED BY

MAINE STATE CREDIT UNION



Keep the fun coming with business and fun, after hours!



Join us for our next Business After Hours:

WEDNESDAY, SEPTEMBER 20 — 5:30 - 7 p.m.

Hosted by Waterville Elks Lodge #905

76 Industrial Road, Waterville

Great food - great drinks - great prizes - a place to meet great friends!

Proudly Sponsored By:



Beverage Sponsor



Submit your 2024 BAH Application – Reserve a Spot Now!



Looking for a way to bring attention to your business in 2024?

Hosting a Mid-Maine Chamber Business After Hours event
should be one of your goals!

Be creative: if you don't have the space, or the budget, plan to partner with another
Chamber member business.

A Business After Hours event:

- Offers great exposure for your business
- Improves networking opportunities
- Makes your business top of mind with prospective customers
- Identifies you as a major participant among area businesses

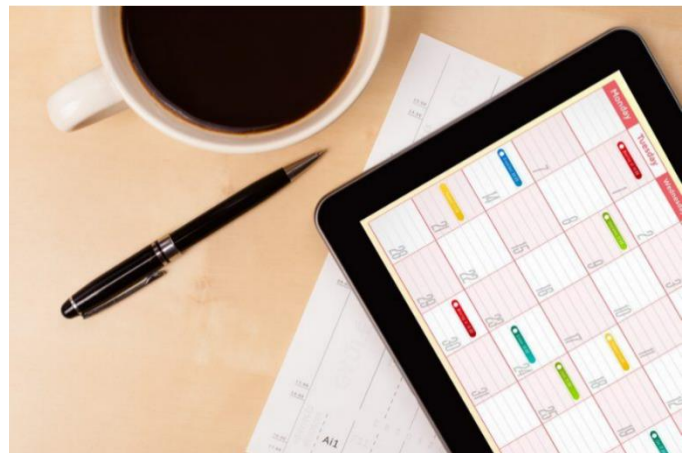
Complete your application now - slots will
fill up quickly!

Go to

[www.midmainechamber.com/Business
After Hours](http://www.midmainechamber.com/BusinessAfterHours) for the application form.

Please specify desired dates and submit prior to
September 15.

You will be contacted with an assigned date following the
BAH Committee meeting at the end of the month.



Proudly Sponsored By:

For more details on this exciting
opportunity, contact:

Cindy Stevens, Program Director
at 873-3315 or
cindy@midmainechamber.com.



Beverage Sponsor