

**MAY 21, 2024 | 12-6 P.M. | Thomas College Field House | 180 West River Rd. | Waterville**  
**Business to Business Showcase**

**RESERVE NOW:**  
[cindy@midmainechamber.com](mailto:cindy@midmainechamber.com) | 207.873.3315



An Event  
of MMCC

- Over 120 Exhibitor Booths
- Over 1,200 Attendees
- Business Recruiting
- Free Parking/Admission
- \$1,000 CASH PRIZE DRAWING and Booth Prize Drawings
- Cash Bar



Thank You to Our Major Sponsors:

\$1,000 Cash Sponsor



50 ELM STREET  
WATERVILLE, ME 04901

TEL: 207.873.3315  
FAX: 207.877.0087

Michelle Joler-Labbe,  
chair of the board

Kimberly N. Lindlof,  
president & CEO

**IN THIS ISSUE:**  
 Calendar of Events  
 Calendar News  
 Ribbon Cuttings  
 People News

**New Chamber Members**  
 Member News  
 Chamber Chatters  
 Upcoming Chamber Events  
 Member Spotlight



# MMCC OFFICE OF COMMUNITY ENGAGEMENT

**Introducing our new Office of Community Engagement** as part of the Mid-Maine Chamber's commitment to fostering meaningful connections and collaboration between communities, travelers, and businesses! This new office will play a pivotal role in strengthening our ties with community members while contributing to the overall growth of tourism and hospitality in the greater Waterville region. The Office of Community Engagement works to attract visitors, both for leisure and business purposes, and plays a pivotal role in showcasing our region's unique attractions, activities, and amenities.

## What does the Office of Community Engagement do?

- 1. Generate Revenue:** work closely with local businesses, hotels, attractions, and event organizers to facilitate tourism development and generate revenue for the local community.
- 2. Visitor Services/Information:** Provide travel guides, brochures, maps, assistance with booking accommodations, recommendations for dining and entertainment and arranging guided tours.
- 3. Event Planning Assistance and Attraction:** Assist in the planning and execution of events, conferences, meetings and conventions while providing valuable support including sourcing venues, arranging accommodations, and recommending local service providers.
- 4. Tourism Marketing:** Create and implement destination marketing strategies to promote the mid-Maine region to potential visitors. This includes digital marketing campaigns, advertising, social media presence, and participation in trade shows and travel events. Here in mid-Maine, we are fortunate to have such a vibrant and interconnected community. Our new office is looking forward to being an integral part of that community, and we are excited about the endless possibilities that lie ahead.

Warm regards,  
Mike Guarino

Community Engagement Specialist, Mid-Maine Chamber of Commerce



## Waterville Creates

First Fridays celebrate the vibrant creativity in Waterville through a wide array of arts experiences. On the first Friday of every month, visit Main Street in downtown Waterville to meet artists, see performances, listen to live music, eat delicious food, shop at local businesses, enjoy the arts, and come together as a community.

**FMI:** [watervillecreates.org/shows/April-first-friday](http://watervillecreates.org/shows/April-first-friday)

## APRIL 2024 MID-MAINE CHAMBER CALENDAR OF EVENTS

- Apr. 2 | KV Connect Steering Committee Mtg. | 8-9:30 a.m.
- Apr. 3 | Executive Committee Mtg. | 12-1:30 p.m.
- Apr. 4 | Ribbon Cutting | Peak Aesthetics | 3-3:30 p.m.
- Apr. 5 | Public Policy Mtg. | 8-9:30 a.m.
- Apr. 10 | Business After Hours | Waterville Humane Society
- Apr. 11 | Business Breakfast Series | 7:15-9 a.m.  
Best Western Plus, Waterville

- Apr. 16 | Board of Directors Mtg. | 7:45-9:15 a.m.
- Apr. 19 | Marketing & Membership Mtg. | 7:30-9 a.m.
- Apr. 25 | 61st Annual Awards Ceremony | 5-8 p.m.  
Elks Banquet Center, Waterville
- Apr. 30 | Workforce Practitioners | 8:30-10:30 a.m.

EVERYWHERE YOU GO, WE ARE TOO!  
**KSWFCUORG**  
Locations in:  
Waterville &  
Belfast  
Phone: 1-207-872-5602  
Apple Pay Google Pay

**SBS Carbon Copy**  
Printing • Copying • Mailing  
54 Main Street, Waterville, ME 04901  
207-873-7947  
[www.maineprintingservices.com](http://www.maineprintingservices.com)

**BBB**  
BEST OF BBB  
AWARDS  
**Mid-Maine Chamber of Commerce**  
is proud to maintain an **A+** rating  
with the **Better Business Bureau.**

**John Butera**  
VP Commercial Banker  
207.858.2555  
[jbutera@skowhegansavings.com](mailto:jbutera@skowhegansavings.com)

"John Butera assisted us with navigating the Paycheck Protection Program. He is quick to return our calls and takes a personal interest in our business."  
- John Goodine, Elm City Photo

I'm here for your business banking needs.  
**Skowhegan Savings**  
800.303.9511 • [Skowhegan.com](http://Skowhegan.com) FDIC



# CALENDAR NEWS

**Apr. 1 | 1-4 p.m. | Waterville Library** | Need help finding a job? A FREE consultant from the **CareerCenter** will be at the Waterville Public Library every Monday to assist with your job search needs. Bring your questions and ideas to this drop-in session for expert help. | FMI: librarian@watervillelibrary.org

**Apr. 6 | 5:30-10 p.m. | Sexual Assault Crisis & Support Center**—24th annual Celebrity Dinner | Augusta Civic Center-76 Community Dr, Augusta, ME.  
FMI: <https://events.handbid.com/auctions/24th-annual-celebrity-dinner-costume-party>

**Apr. 8 | 3:35 p.m.** | Total solar eclipse will take place at the Moon's ascending node. Totality locations: Texas to Maine.  
FMI: science.nasa.gov

**Apr. 11 | 7 p.m.** | Waterville Opera House—Popovich Comedy Pet Theater  
FMI: [watervillecreates.org/shows/popovich-comedy-pet-theater](http://watervillecreates.org/shows/popovich-comedy-pet-theater)

**Apr. 12 | 8-9:30 a.m.** | KV Connect "Coffee & Conversation" | **Bricks Coworking & Innovation Space**, 10 Water St., Suite 110, Waterville | FMI: kvconnect.org

**Apr. 25 | 5-8 p.m.** | **MMCC 61st Annual Awards Ceremony**  
Waterville Elks Banquet Center, 76 Industrial Road | FMI: midmainechamber.com

**Apr. 26, 27 + May 3, 4 | 7:30 p.m./Apr. 28 + May 5 | 2 p.m.**—HEAD OVER HEELS, laugh-out-loud love story. | Sponsored by: **Surette Real Estate, New Dimensions FCU, and Maine Savings FCU**  
FMI: watervillecreates.org

**Apr. 28 | 9 a.m.** | **Sexual Assault Crisis & Support Center**—13th annual One in Five 5K  
FMI: silentnomore.org/one-in-five-5k.html

For more *Calendar News*, log onto <https://www.midmainechamber.com/events/event-calendar>

# NEXT RIBBON CUTTING

**Apr. 4, 3-3:30 p.m.** | **Peak Aesthetics**  
325C Kennedy Memorial Drive, Waterville

*Proudly Sponsored by:*



Don't miss upcoming ribbon cuttings. Help us welcome new businesses to the neighborhood.

Looking to push out your marketing?  
Buy a MMCC member list!  
MMCC's members pay only \$50!  
Please note that emails are not included.

# WELCOME NEW MEMBERS

**Brenda's Best Cleaning Service Inc.** | 63 Federal Street  
Portland, ME 04101 | Danielle McDonough | 207.671.0503  
E: [brendabestoffice@gmail.com](mailto:brendabestoffice@gmail.com)

**Oliver & Friends Bookshop**  
150 Main Street | Waterville, ME 04901 | Renee Cunningham  
207.707.2123  
E: [oliverandfriendsbooks@gmail.com](mailto:oliverandfriendsbooks@gmail.com)

**China Lake Provisions, LLC**  
176 Stanley Hill Road | China, ME 04358 | Mike Brown & Jim Malinky | 207.986.5080  
E: [chinalakeprovisions@gmail.com](mailto:chinalakeprovisions@gmail.com)

**Saldana Tree Service & Landscaping**  
82 Old Waterville Road | Oakland, ME 04963 | Fernando Saldana  
207.449.8063  
E: [saldanallc@hotmail.com](mailto:saldanallc@hotmail.com)

**Dave's World** | 108 Leighton Road  
Augusta, ME 04330 | Nick Labbe  
207.620.1110  
E: [nick.labbe@davesworld.com](mailto:nick.labbe@davesworld.com)

**Treasures of Aleta Travel**  
71 S Factory St. | Skowhegan, ME 04976 | 207.431.3983 | Jennifer Carey | E: [dellaama@yahoo.com](mailto:dellaama@yahoo.com)

# MARCH RIBBON CUTTINGS



**New Beginnings 2**  
1 College Avenue,  
Waterville (former  
Ken-a Set location)



**CENTURY 21**  
Nason Realty, Inc.

Residential • Seasonal • Commer-  
www.c21nason.com  
207-873-2119  
Each Office Independently Owned & Operated

11 Bay St., Winslow,  
Don't settle for average.

Supporting the Waterville arts, culture and business community.

The Advantages of Membership

- Low Rate Loans
- Free Checking
- Mobile Banking
- Debit Card Rewards

**Connected** credit union

[connectedcreditunion.org](http://connectedcreditunion.org)  
85 Civic Center Drive, Augusta  
12 Monument Street, Winslow

# PEOPLE NEWS

**Kennebec Valley Council of Governments** named Joel Greenwood as executive director.

FMI: [kvcog.org](http://kvcog.org)

**LifeFlight of ME** announces Kyle Madigan, director of client relations, leading an initiative that includes expanded outreach to hospitals, first responders, emergency medical services and 911 centers across ME's 16 counties.

FMI: [lifeflightmaine.org](http://lifeflightmaine.org)

**Friends of Quarry Road** have announced the addition of Jennifer Kierstead, 1st executive director. Additionally, 2 new board members were elected, Pat Cote & Mike Duguay.

FMI: [quarryroad.org](http://quarryroad.org)

**Northern Light Inland Hospital** welcomes: Brian Abbott, DO, a nonsurgical orthopedic and sports medicine physician.

Congratulations to Rose Rogers, BSN, RN, recently promoted to director of Northern Light Walk-In Care and **Northern Light Inland Hospital** Emergency Dept.

**Northern Light Inland Hospital** also welcomes the following community members to its board of trustees:

Kelly Huggins, CPA, MBA, certified public accountant & tax director at **One River CPAs**.

Bert Languet, CFP, MBA, has been a certified financial planner with **Golden Pond Wealth Management** for 28 years.

Tonya Philbrick-Labbe, after retiring from State of Maine Department of Health and Human Services, started a second career as a product owner for Gainwell Technologies.

Dr. Katie Spencer White, president and CEO of the **Mid-Maine Homeless Shelter and Services** and was appointed by Governor Mills to serve on the Maine Statewide Homeless Council.

Catherine Kimball, DO, continues her almost 25-year board membership. She is a retired family medicine physician with **Northern Light Primary Care**. FMI: [northernlighthealth.org](http://northernlighthealth.org)

Congratulations to Bruce Harrington, promoted to senior vp of Commercial Lending at **Maine State Credit Union**. FMI: [mainestatecu.org](http://mainestatecu.org)

**Junior Achievement** team, welcomes Michelle Prejean as executive administrator to the leadership team. FMI: [maine.ja.org](http://maine.ja.org)

**HealthReach Community Health Centers** announces 2 new board members for 2024: Carolyn Tranten and Jenny Boyden. FMI: Contact Comm. Dept. - 207.660.9914

## Distinguished ALUMNI AWARDS

Honored this year as **Kennebec Valley Community College's Distinguished Alumni:**

**Cindy Stevens, Program Director, Mid-Maine Chamber of Commerce**



**Camden National Bank** announces the promotion of Barbara Rath, who formerly served as director of treasury management & government banking, to executive vp, commercial banking. FMI: [camdennational.bank](http://camdennational.bank)

**KVCAP** is pleased to welcome its newest employees: Alix Penney -substitute aide, Child & Family Services and Stephanie Ward -family visitor, Social Services FMI: [kvcap.org](http://kvcap.org)

### CHAMBER BOARDROOM RENTAL

Includes Video Equipment and Coffee Service

**4 hours (1/2 day)** — Member Rate: \$75  
Non-Member Rate: \$105  
**Full Day** — Member Rate: \$125  
Non-Member Rate: \$155

Call Jamie at 207.873.3315 or email [jamie@midmainechamber.com](mailto:jamie@midmainechamber.com) to book TODAY.



**Crossroads-TV**  
Where Knowledge Connects

**Services Include**

Broadcasting, Livestreams, Product or Business Promotions  
\*HYBRID LIVESTREAM WITH ZOOM INTERFACE\*  
Interviews, Special Announcements, Instructional Videos

[crossroads-tv.com](http://crossroads-tv.com)

MONDAY, JUNE 17, 2024

WATERVILLE COUNTRY CLUB, 39 COUNTRY CLUB RD., OAKLAND



There is no lack of fun at the Mid-Maine Chamber Golf Classic held annually in June on a local golf course. Area businesses sponsor a team of 4 to represent them with up to 36 teams playing 18 holes for fun and prizes. Whether you are a golfer or not, there are many sponsorship opportunities for chamber members to participate. Events like this help support the Chamber so we can, in return, help sustain and grow businesses in our area. FMI: <https://www.midmainechamber.com/events/chamber-golf-classic> or T: 207.873.3315. | See flyer insert for registration.



# MEMBER NEWS

**Kennebec Savings Bank** awards (3) \$30K Catalyst Grants to local non-profits. Kennebec Savings Bank recently named the **Waterville Area Soup Kitchen**, Mitchell Institute, and Augusta Teen Center as the recipients of its Catalyst Grants. These gifts are designed to support creative concepts that might otherwise not be possible for the non-profit org. **FMI:** [kennebecsavings.bank/community/catalyst-grants](http://kennebecsavings.bank/community/catalyst-grants)

**New Dimensions Federal Credit Union** staff and members raise over \$25K to Combat Hunger in Maine Communities. **FMI:** [newdimensionsfcu.com](http://newdimensionsfcu.com)

**Champions Fitness Club** | 30 Elm Plaza, Waterville has added 4 more pickleball courts, now 8 courts. Book pickleball time now! **FMI:** 207.873.0571

**Junior Achievement** has volunteer opportunities at China Elementary: Grades 2, 3, 4 -- JA Our Community, JA Our City, JA Our Region; 6 volunteers needed. **FMI:** [maine.ja.org](http://maine.ja.org)

**Mid-Maine Regional Adult & Community Education** recently announced that between Waterville & Messalonskee, it registered 1396 enrichment classes this winter. **FMI:** [midmaine.maineadulted.org](http://midmaine.maineadulted.org)

**Hight Ford** won the 2023 Ford President's Award, the highest award given by Ford Motor Co. for the 5th time in 8 yrs. as top dealer, "Celebration of Excellence", according to Ford Motor Co.

**KV Connect**, the area's young professionals' group, recently held its annual Channel Your Flannel fundraiser to benefit **United Way of Kennebec Valley's** Keep ME Warm fund, providing emergency heating assistance to community members. Sponsored by Chris Wadsworth with **Ameriprise Financial**, the event brought over 20 people together to raise approximately \$500. **FMI:** [kvconnect.org](http://kvconnect.org)



As of Apr. 1, Waterville Pediatrics, 295C KMD, will operate as a practice of **MaineGeneral Medical Center (MGMC)**. Waterville Pediatrics will remain at its current location and will have the same care team and phone number. **FMI:** [mainegeneral.org](http://mainegeneral.org)

**Maine DOT-Waterville-Winslow**

**Ticonic Bridge Project** update on detour maps & closures.



**FMI:** [maine.gov/mdot/projects/waterville/ticonicbridge](http://maine.gov/mdot/projects/waterville/ticonicbridge)

The **city of Waterville** has partnered with CivicReady to implement its mass notification system. CivicReady will allow the city to issue routine communications, urgent notifications, emergency instructions and warnings to subscribed citizens via email, text message and voicemail alert. **For free sign up go to:** [waterville-me.myfreealerts.com](http://waterville-me.myfreealerts.com)

## TASTE OF WATERVILLE-JULY 31, 2024



Brought to you by the Mid-Maine Chamber

**SAVE THE DATE!**  
**32ND ANNUAL**  
**TASTE OF WATERVILLE**  
**WEDNESDAY JULY 31, 2024**  
**12-10 PM | HEAD OF FALLS**

Join us for entertainment throughout the day and into the evening!

**Local Restaurants & Food Trucks**  
**Beer Gardens | Brew Tastings | Live Music & Performances**  
**Variety of Vendors** **FMI:** <https://tasteofwaterville.com/> or T: 207.873.3315.



**PRIME FINANCIAL, INC.**  
*Financial Services & Insurance*

Roland Fournier  
**CERTIFIED FINANCIAL PLANNER™ PROFESSIONAL**

ChFC, CLU, CMFC, MSFS, CASL, REBC

*Securities and Advisory Services offered through LPL Financial, a registered Investment Advisor*

Member FINRA/SIPC

753 West River Rd.  
 PO Box 59  
 Waterville, ME 04903  
 Phone (207) 877-9450  
 (800) 877-9450  
 Fax (207) 877-8876



6 Jefferson St., Waterville ME  
 (207) 873-6228

**KNOWLESMECHANICAL.COM**

(207) 445-4092



**Commercial & Residential**  
**Plumbing \* Heating \* Ventilation**  
**A/C \* Refrigeration \* Core Boring**  
**Metal Fab \* Sales and Service**  
**Installs, Maintenance and**  
**24 Hour Energy Service**

# UPCOMING CHAMBER EVENTS

## Business Breakfast



**Topic:** Quality Child Care: A Vital Component of a Community's Economic Structure  
**Date:** April 11, 2024 | 7:15-9 a.m.  
**Location:** Best Western Plus, 375 Main Street, Waterville  
**REGISTER:** [midmainechamber.com](http://midmainechamber.com) or Cindy: 207.873.3315 | \$23. members, \$29. n/m



Tracy Fortin



Rhonda Kaiser



Mary-Gené Rumery

COO, KVCAP/Educare Central Maine, Tracy Fortin, Educare School Director Rhonda Kaiser, and Parent Ambassador, Mary-Gené Rumery, will share data and strategies to increase quality early childhood programming across Maine.

### THANK YOU TO OUR SPONSORS:



## Business After Hours



An Event Series of MMCC

Join us for our next Business After Hours:  
**Wed., April 10 | 5:30 -7 p.m.**  
**Hosted by: Humane Society-Waterville Area**  
**100 Webb Rd, Waterville**

**FMI:** [midmainechamber.com/events/business-after-hours](http://midmainechamber.com/events/business-after-hours)

A great place to network and market your business. Hors d'oeuvres and adult beverages are served. 50/50 raffle and fabulous door prizes donated by area businesses.



Picture courtesy of TD Bank BAH on Feb. 28, 2024.

### THANK YOU TO OUR SPONSORS:



# STATE OF MAINE NEWS

## TRANSITIONAL TRANSPORTATION

Transitional Transportation (TT) can provide eligible families with help paying for work-related travel expenses. *You may qualify if:*

- You are currently working at paid employment; and
- You have a work-related travel expense; and
- You have a child under the age of 18 in your home; and
- Your income is below 200% FPL, before taxes and withholdings (Expanded TT); or
- You have recently closed TANF, and your income is below 250% FPL, before taxes and withholdings (TANF Related TT)

Work-related travel expenses are reimbursed based on the number of miles traveled for work each day. Reimbursement is .46¢ per mile, up to \$20 per day. You can receive TT for up to 18 months.

Expanded TT 200% FPL		TANF Related TT 250% FPL	
Household Size	Gross Monthly Income	Household Size	Gross Monthly Income
1	\$2,430	1	3,038
2	\$3,287	2	4,109
3	\$4,144	3	5,180
4	\$5,000	4	6,250
5	\$5,857	5	7,321
6	\$6,714	6	8,392
7	\$7,570	7	9,463
8	\$8,427	8	10,534

Applications are available online:  
[www.maine.gov/dhhs/ofi/applications-forms](http://www.maine.gov/dhhs/ofi/applications-forms)

### Return applications:

Mail: Office for Family Independence | State of Maine-DHHS 114 Corn Shop Lane | Farmington, ME 04938

E: [Farmington.DHHS@maine.gov](mailto:Farmington.DHHS@maine.gov)  
 Fax: 1-207-778-8429

For assistance: 855-797-4357 or Maine Relay 711 (TTY)

Serving Maine Since 1947

Engineering  
Design - Build  
General Contracting  
Construction Management

33 Sheridan Drive  
Fairfield, Maine 04937  
(207)453-9311

Building on our promise  
[WWW.SHERIDANCORP.COM](http://WWW.SHERIDANCORP.COM)

Food and companionship  
enriching life

[www.elanco.com](http://www.elanco.com)

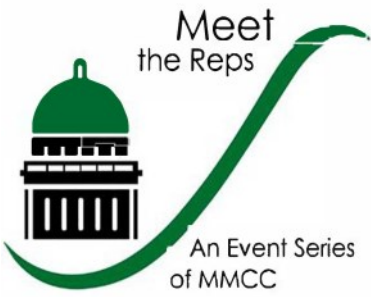
ADVERTISE in MMCC's INTOUCH Newsletter — a smart place to showcase your business!

Small block: (2.5" wide by 1.25" tall):  
\$495/year

Large block: (2.5" wide by 2.5" tall):  
\$645/year

FMI: [jennifer@midmainechamber.com](mailto:jennifer@midmainechamber.com)  
 OR T: Cindy: 207.873.3315





Co-Hosted By:



Thank you to all that attended on March 7 and to our sponsors, Kennebec Savings Bank and Valley Beverage.



Business Breakfast

DR. AMANDA STENT



Thank you to all that attended our sold out breakfast presentation on March 14 for the *AI Phenomenon* discussion and to our sponsors: New Dimensions FCU; AT&T; CROSS Insurance; Nicholson, Michaud & Nadeau; Sheridan Construction; Morning Sentinel; Mix-Maine Media; and Kennebec Savings. FMI: <https://vimeo.com/922980031?share=copy>

MAINE TECHNOLOGY GROUP

*Experience IT Differently!*

CLOUD SOLUTIONS  
BUSINESS SOLUTIONS  
MANAGED IT SERVICES  
CARRIER SERVICES

120 Augusta Rd • Winslow, ME  
(207) 692-0955  
[www.maintechgroup.com](http://www.maintechgroup.com)

ADVANCE 1  
CLEANING & DISASTER RESTORATION

Office Cleaning  
Customized to Meet Your Needs!  
Daily, Weekly, Or Monthly

- Window Washing
- Dusting
- Bathroom Cleaning
- Vacuuming
- Sweeping / Mopping Floors

207-873-1241 - [www.advance1clean.com](http://www.advance1clean.com)

SILVER STREET Tavern

2 Silver Street, Waterville ME

KENNEBEC VALLEY COMMUNITY COLLEGE

YOUR BRIDGE TO A BRIGHTER FUTURE

For more information visit [kvcc.me.edu](http://kvcc.me.edu)

NEW LOOK – SAME GREAT EDUCATION

## MEMBER SPOTLIGHT: COLDWELL BANKER | PLOURDE REAL ESTATE

**Coldwell Banker Plourde Real Estate reflects on the company's growth and success on its 35th Anniversary while looking forward to the future!**

A new year is here, and change is coming to the real estate industry! In celebrating 35 years in business, Coldwell Banker Plourde Real Estate, the leader in residential and commercial real estate in central Maine, takes pride in the ability to stay at the forefront of technology and remain committed to evolving as the real estate industry changes.

Founded in 1989 by Don and Irene Plourde, the company began with two agents and has grown to over 30 professionals. CB Plourde Real Estate looks forward to the future as Jamie Plourde – second generation to the CB Plourde family – helps continue to build the business and invest in the community.

In a relationship-driven business such as real estate, agents have made it possible to stay connected to clients and the community. CB Plourde appreciates the loyalty of its customers and work hard to be the team that one can trust in achieving one's real estate goals.

CB Plourde would like to thank the Mid-Maine Chamber of Commerce and their members for their support these past 35 years. Like many others in this community, MMCC is committed to promoting the central Maine area as a great place to live, work, and play!

It's an exciting time to be in Waterville and in real estate, so if one ever considered a career change, give them a call. CB Plourde is always looking to add to what it feels is the best team in real estate! Check out the website ([www.cbplourde.com](http://www.cbplourde.com)) for all real estate needs and be sure to follow on Facebook and Instagram (@cbplourde).



**COLDWELL BANKER**  
**PLOURDE**  
**REAL ESTATE**



**PHARMACY**  
**SAVAGES DRUG**

FAIRFIELD PHARMACY 02743-3431  
OAKLAND PHARMACY 02746-4446  
UNITY PHARMACY 02749-2729



**BUDDIES GROCERIES**  
**IGA**  
207-465-2621  
43 Main Street • Oakland  
[SavagesDrug.com](http://SavagesDrug.com)

**Workplace Health** MaineGeneral Medical Center

- Injury treatment & management
- Employee wellness
- Drug & alcohol testing
- DOT physicals

Augusta — 621-7550 Waterville — 872-4260

Visit us at [workplacehealth.mainegeneral.org](http://workplacehealth.mainegeneral.org).



**Quality and Value**  
**Since 1912**  
[www.hamelinfurniturecompany.com](http://www.hamelinfurniturecompany.com)

**Hamelin Furniture Co.**  
CORNER WESTERN AVE. & SOUTH ST. WATERVILLE, MAINE  
872-8433





Tuesday, May 21, 2024
Thomas College Field House
West River Road, Waterville
12:00 to 6:00 p.m.

Sign up today!
Don't miss out on a great day of networking at central Maine's largest trade show.



www.MIDMAINEB2B.COM

Once registration form is signed and returned your company will be charged for event.

Contact person (please print): \_\_\_\_\_

Company Name: \_\_\_\_\_

Phone: \_\_\_\_\_ Email: \_\_\_\_\_

Booth #: 1st Choice \_\_\_\_\_ 2nd Choice \_\_\_\_\_ 3rd Choice \_\_\_\_\_

Please circle one: Booth \$335.00 Booth & Tablecloth \$365.00\*

I DO NOT NEED A TABLE

\*If using a table, tablecloths are required. Companies requesting tablecloths the day of the event will be charged \$50

Are you hiring? YES NO

Disclaimer: Booth choice will be on a first-come, first-served basis and cannot be reserved without payment.

Cancellations must be made 4 weeks prior to the event for a full refund.

Fax form to 877-0087 or e-mail cindy@midmainechamber.com to reserve your booth.

Please see the most updated floor plan at www.midmainechamber.com

Signature of Authorized Individual: \_\_\_\_\_

Thank You to Our Major Sponsors:

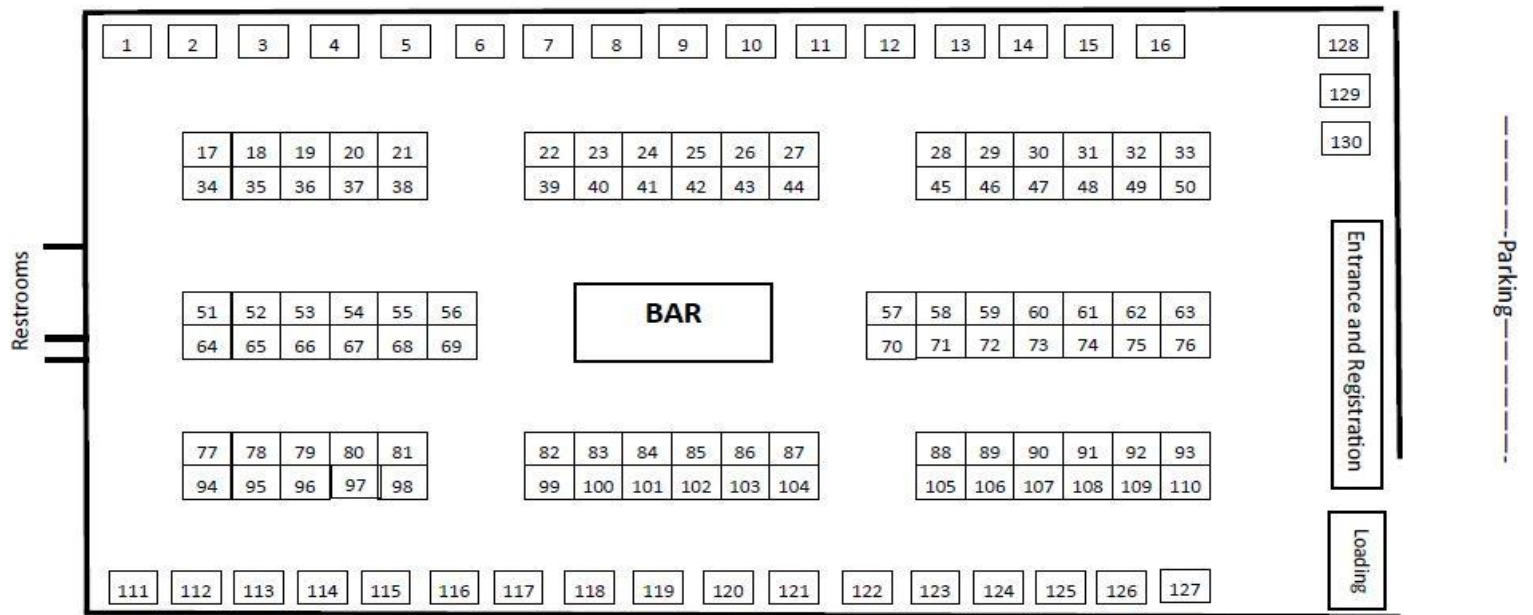


\$1,000 Cash Sponsor



Lanyard Sponsor

Program Sponsor



-----Sidewalk and Emergency Exits-----

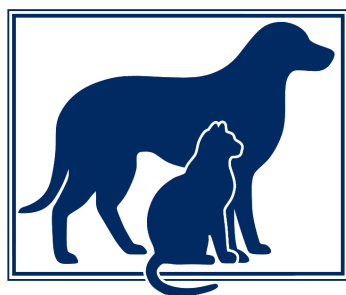
1	34	63 Kennebec Savings Bank	96
2	35	64	97
3	36 Northeast Laboratory	65 Good-Will Hinckley	98 Bowman Constructors
4	Services (NEL)	66 Prime Financial	99 Lynch Landscaping
5	37 Central Maine ATV Club	67 Thomas College GPS&PCD	100
6 Townsquare Media- 92	38 Renewal By Andersen	68 Surette Real Estate	101
Moose & B98.5	39 Central Maine Motors Auto	69 Transco Business	102
7	40 Coldwell Banker Plourde RE	Technologies	103
8 give I.T. get I.T.	41 Central Maine Power	70 Seacoast Security	104 Maine Dept. of Labor
9	42 Comparion (Liberty Mutual)	71 KSW Credit Union	105 Mid-Maine Homeless
10	43 Eye Care of Maine	72 Bangor Savings Bank	Shelter
11	44 Maine Children's Home for	73 Gateway Financial	106
12 Aubuchon Hardware	Little Wanderers	74 Purdue Global	107
13	45 The Town Line	75 Brookfield Renewable U.S.	108
14	46 Bright Beginnings Learning	76 Kennebec Savings Bank	109 Maine Savings FCU
15	Center	77 Ware-Butler	110 Treasures of Aleta Travel
16 Summit Natural Gas	47 Brenda's Best Cleaning	78 Northern Light Home Care	111
17	Services, Inc.	and Hospice	112
18	48 MaineGeneral Health	79 Northern Light Work Health	113
19	49 Dave's World	80 Town of Fairfield	114
20	50 Camden National Bank	81 Sheridan Construction	115
21	51 Finance Authority of Maine	82 Dominion Law	116 Woodlands Senior Living
22 Advance 1 Cleaning	52 Back in Motion Physical	83 Cayer Security	117 A.E. Hodsdon Engineers
23	Therapy	84 Maine State Credit Union	118
24	53 Kennebec Behavioral Health	85 Maine State Credit Union	119
25	54 Kenn. Valley Comm. College	86 Allen Insurance & Financial	120 The Shyft Group/Duramag
26	55 Bacon Property Services	87 Mix Maine Media	121
27 TD Bank	56 Techy/No Neg. Photography	88 Northern Light Inland	122 Humane Society
28 What About Maine?	57 Valley Beverage	Hospital	Waterville Area
29	58 Bar Harbor Bank & Trust	89 Better Business Bureau	123
30	59 Silvertown BBQ Bar	90 Waterville Rotary Clubs	124 Pine Tree Cellular
31	60 SKILLS, Inc.	91 BNI	125 Maine Pine Catering
32	61 SKILLS Opportunities	92 Bromar Printing	126 Healthy Living for ME
33 Morning Sentinel	Driving School	93 A2Z Computing	127 Spectrum Generations
	62 United Way of Kennebec	94 Northern Light Pharmacy	128
	Valley	95	129
			130

**Please note:** some adjustments may need to be made prior to, or on the date of the event. Every attempt will be made to keep your business in the booth selected.

Power is available for all booths; however, a 50-100 foot extension may be necessary, depending upon booth placement in relation to location of power. WI-FI is active throughout the field house.



Keep the fun coming with business and fun, after hours!



**HUMANE  
SOCIETY**  
WATERVILLE AREA  
[www.hswa.org](http://www.hswa.org)

Join us for our next Business After Hours:

**WEDNESDAY, April 10 — 5:30 - 7 p.m.**

**Humane Society Waterville Area**

**100 Webb Road, Waterville**

**Great food - great drinks - great prizes - a place to meet great friends!**

**Proudly Sponsored By:**



**Kennebec  
Savings Bank**



**CENTRAL MAINE  
POWER**

**Valley Beverage**

**Beverage Sponsor**

# Business Breakfast



An Event Series  
of MMCC



Tracye Fortin



Educare Parent Ambassador Mary-Gene Rumery



Rhonda Kaiser

## When:

Thursday,  
April 11, 2024  
7:15 - 9:00 a.m.

## Where:

Best Western Plus,

375 Main St., Waterville

## Quality Childcare: A Vital Component of a Community's Economic Structure

Join the Mid-Maine Chamber for an engaging presentation with our panel of three early childhood leaders, including Chief Operating Officer KVCAP/Educare Central Maine Tracye Fortin; Educare School Director Rhonda Kaiser, and Parent Ambassador, Mary-Gene Rumery. This panel will share data and strategies to increase quality early childhood programming across Maine.

Please come prepared with your questions and take this opportunity to connect with other business leaders.

Pre-register today: cost per person: \$23 for members.

\$29 at the door and for non-members.

Registration includes breakfast.

TO REGISTER: [cindy@midmainechamber.com](mailto:cindy@midmainechamber.com),  
[www.midmainechamber.com](http://www.midmainechamber.com) or 873-3315

Thank you to our additional April sponsor:



Please visit our breakfast spotlighters, Baking With Danielle,  
Dr. Brian Gillis, Healthy Communities of the Capital Area



Radio  
sponsor



Video  
sponsor





Chamber  
Golf Classic



An Event  
of MMCC

MID-MAINE CHAMBER OF COMMERCE

# CHAMBER GOLF CLASSIC

MONDAY, JUNE 17, 2024

WATERVILLE COUNTRY CLUB

9 A.M. SHOTGUN START

REGISTER EARLY TO JOIN THE FUN!

QUESTIONS:

[CINDY@MIDMAINECHAMBER.COM](mailto:CINDY@MIDMAINECHAMBER.COM)



Sponsored by Central Maine Power and Maine State Credit Union

# Mid-Maine Chamber Golf Classic

## June 17, 2024 - Waterville Country Club



### EVENT DETAILS:

**Entrance fee is \$725 per team for Chamber members or \$800 for non-Chamber members.**

- > 9 a.m. start. Lunch is provided.
- > Closing ceremony with appetizers served.
- > NO minimum handicap.
- > Purchase a ticket for a chance to be one of five qualifying players for the One Million Dollar Cash Prize. The closest qualifier plays to win the One Million Dollars!
- > All four par 3s have a hole-in-one contest. Players have a chance to win a Vehicle, \$10,000 in cash, \$5,000 in cash, and a \$5,000 vacation voucher.
- > All par 3s have a closest-to-the-pin contest.
- > Contest with prizes for straightest drive and longest drive.
- > Top 3 teams with the best gross score and the top 3 teams with the best net score win prizes.
- > Highest score wins a prize, too!
- > Prior year teams get first preference for sign up.

**Please remit payment no later than May 1, 2024 to : Cindy Stevens, MMCC, 50 Elm St., Waterville, ME 04901 or call in your payment by phone to 873-3315.**

**Business:** \_\_\_\_\_

**Signature:** \_\_\_\_\_

**Email address:** \_\_\_\_\_

Player #	Player Name:	Player Handicap	\$725 \$800		Team Total Due
			Chamber Member	Non-Member	
1					
2					
3					
4					

\* Registration includes extras: 1 yardstick-same as a string; 1 mulligan; 1 50/50 ticke ; 1-Million Dollar Hole-in-One ticket (\$10 ea.)

TOTAL TEAM AMOUNT ENCLOSED:

Proudly sponsored by:





**TICKETS OPEN TO THE PUBLIC! USD \$25 CAD \$33.25**

(NOTE TICKETS ARE SOLD IN CAD BUT THE EXCHANGE RATE TO USD WILL BE APPLIED)

**AUTHOR, FILMMAKER,  
MENTAL HEALTH ACTIVIST**

**LIVE ▶ KEVIN HINES**

# Suicide: The Ripple Effect

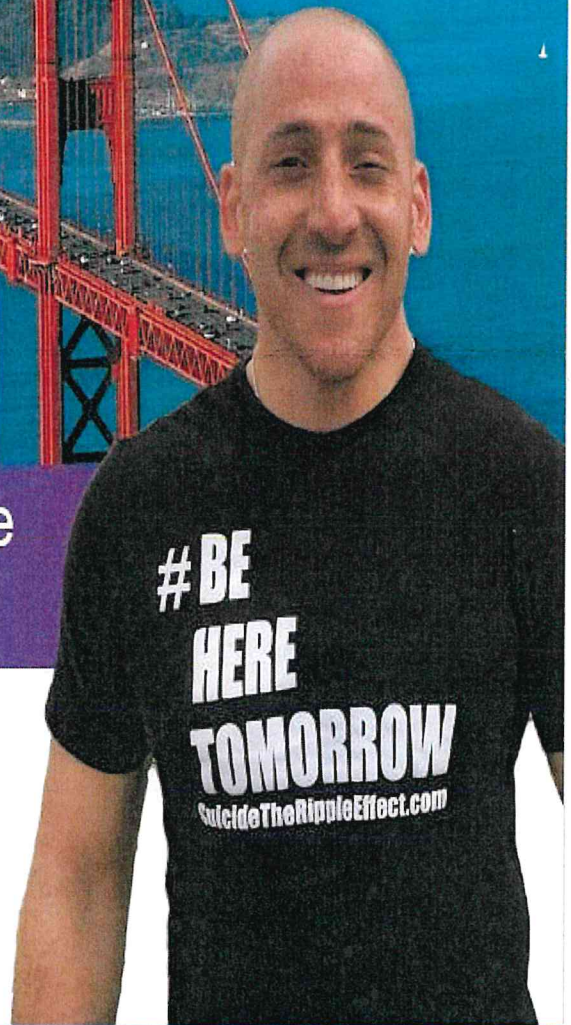
Come hear Kevin's story of Hope  
in Action!

Location: Waterville Opera House

 **Date: Saturday**  
June 22, 2024  **Time:**  
11:00 - 12:15

Followed by Meet & Greet with Kevin!

Scan to  
purchase tickets



**SPONSORED BY:**



Suicide: The Ripple Effect documentary  
will be showing at the Maine Film Center  
at 2:00 PM on Saturday, June 22 -  
tickets will be available through the  
Maine Film Center



# REFRESH YOUR SAVINGS



Educate. Empower. Evolve.

## SHARE CERTIFICATE

**5.17% APY\***

**7-MONTH  
TERM**

**LIMITED TIME ONLY!**

WATERVILLE • WINSLOW • SKOWHEGAN

[newdimensionsfcu.com](http://newdimensionsfcu.com)

(800) 326-6190

\*Annual Percentage Yield; Rate accurate as of 03/01/2024; Rate subject to change without notice; membership eligibility required. Early withdrawal fees apply. Minimum deposit of \$1,000.00. Offer also includes the option to open Roth, ESA, or IRA Share Certificates. Federally Insured by NCUA.





# Strengthen Your Financial Future.

SHARE CERTIFICATE

**4.59** % APY\*

**11-MONTH  
TERM**

**LIMITED TIME ONLY!**



Educate. Empower. Evolve.

WATERVILLE • WINSLOW • SKOWHEGAN

[newdimensionsfcu.com](http://newdimensionsfcu.com)

(800) 326-6190

\*Annual Percentage Yield; Rate accurate as of 03/01/2024; Rate subject to change without notice; membership eligibility required. Early withdrawal fees apply. Minimum deposit of \$1,000.00. Offer also includes the option to open Roth, ESA, or IRA Share Certificates. Federally Insured by NCUA.





Sexual Assault  
Crisis &  
Support Center

Helping Our Community Become Silent No More

13th  
annual  
One in Five 5K

Virtual &  
In-Person  
options!

One in Five



In Maine, 1 in 5  
people will experience  
sexual violence in  
their lifetime.

RACING FOR THE ONE

April 28, 2024 | 9 AM

FirstPark, Oakland

[RunSignUp.com/OneInFive5K](https://RunSignUp.com/OneInFive5K)

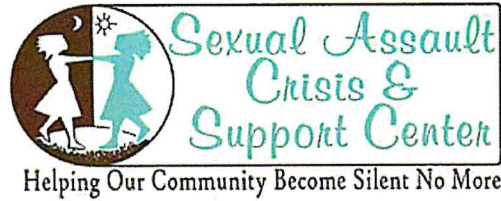
Advocate Sponsor



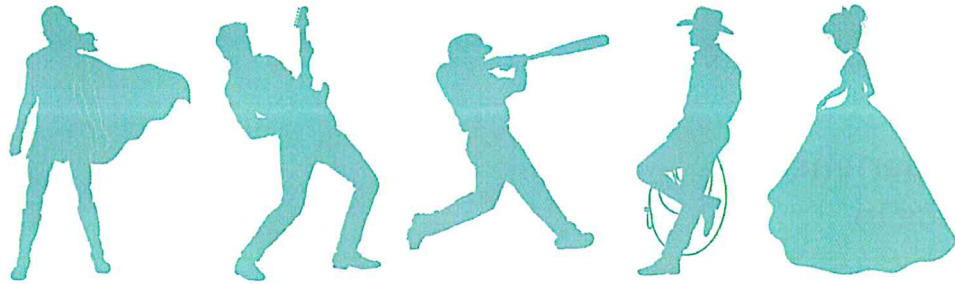
KSW  
Federal Credit Union

[SilentNoMore.org](https://SilentNoMore.org) | 24-hour Crisis & Support | 1-800-871-7741





# 24TH ANNUAL CELEBRITY DINNER COSTUME PARTY



auction, buffet, dancing, entertainment. raffles & more

## Platinum Sponsors

**Franklin**  
Savings Bank



## Gold Sponsors

Peter & Morgan Cote



April 6th, 2024 - 5:30-10:30 p.m.  
at the Augusta Civic Center

**Tickets: [handbid.app.link/costumeparty](https://handbid.app.link/costumeparty)**

A fundraiser for the Sexual Assault Crisis & Support Center  
SilentNoMore.org / 24-hour support line: 1-800-871-7741.



## MCH is Turning 125 on April 10th!

### Dear Members of Our Supportive Business Community!

The Team at Maine Children's Home (MCH) would love for you to drop by our campus (93 Silver Street in Waterville) on April 10 anytime between 10 a.m. and 2 p.m. to enjoy a piece of cake with us.

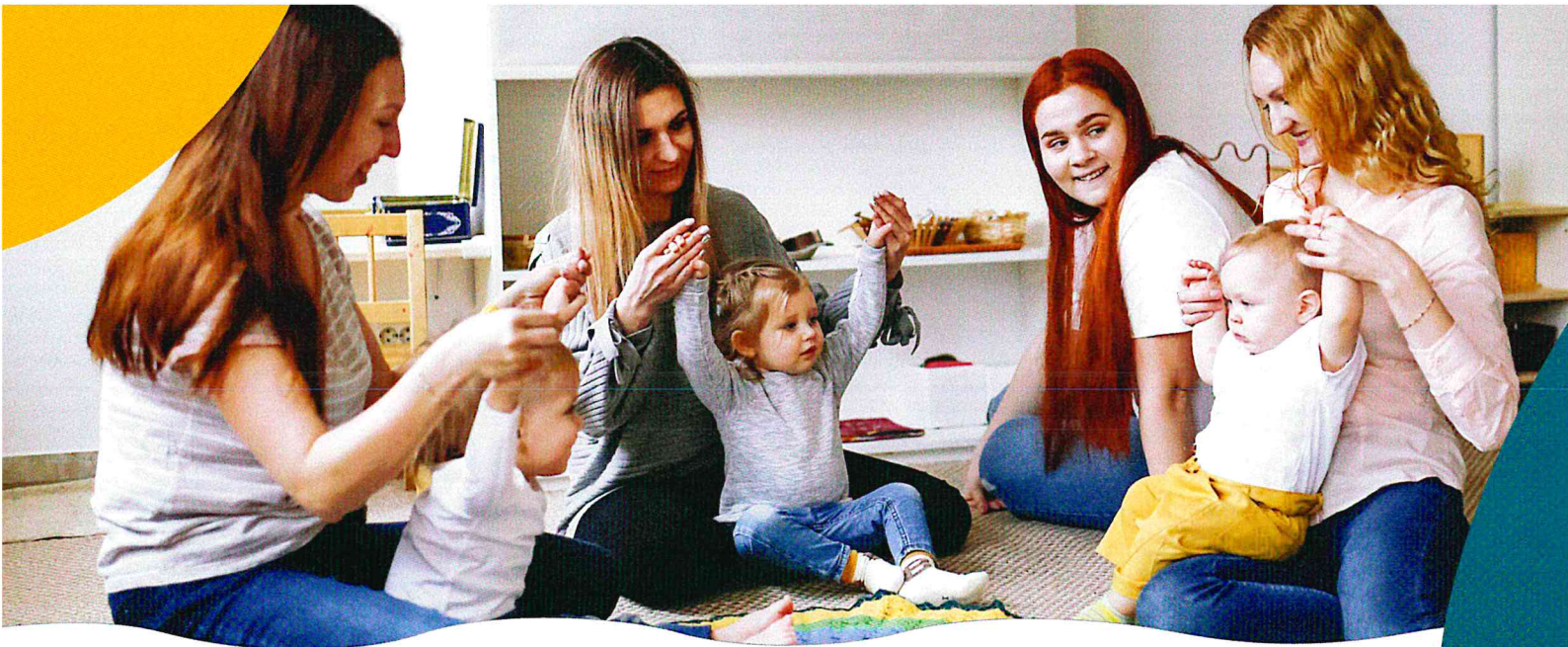
If you're not able to make it, please know that we are thankful for your kindness and incredible support over the years. You make a difference in our community. THANK YOU!

### Stay Connected with Us During Our 125th Year!

Throughout this year, we will be sharing exciting news about the impact of our services, partnerships with supporting organizations like yours, and our efforts to give back to our community in new ways. Scan this QR code to stay informed with our quarterly newsletters!







## Maine Children's Home: Evolving with Community Needs

Maine Children's Home (MCH) is a 501(c)(3) organization that offers services for building and strengthening families and their children, instilling hope for the future and a better quality of life.

Founded in 1899, the Waterville-based organization has evolved with the changing needs of families and children, and thousands of people each year through four core programs in young parent support, mental health counseling, winter essentials, and adoption.

### YOUNG PARENT SUPPORT

Journey Program offers young parents classes in prenatal education, parenting instruction, independent living skills, mental health access and supports, and other practical knowledge. The focus of the program is to provide parents the knowledge, tools, and skills they need to be academically, financially, and emotionally successful individuals and parents.

### MENTAL HEALTH COUNSELING

Family Counseling Center is a state-licensed outpatient mental health program and facility that provides counseling to individuals, couples, children, and families. The center provides a warm, welcoming, and comfortable environment for clients to receive the best possible mental health care.



Volunteers in the MCH Winter Essentials Christmas Program packed boxes for 1,181 children and 541 families in 2023.

### WINTER SUPPORT FOR FAMILIES

The Winter Essentials Christmas Program is the only one of its kind that provides brand new clothes, winter essentials, toys, books, and games to more than 1,100 Maine children whose families are facing financial hardship. This program that relies on the generosity of so many people — donors, volunteers, and community supporters — also connects families to additional resources as needed, such as mental health and parenting supports.

### ADOPTION AND BIRTH PARENT SUPPORT

The Hague-Accredited Family Adoption Program is a comprehensive adoption agency that offers professional services and support to all members of the adoption triad — adoptive parents, birth parents, and adoptees.

Maine Children's Home helped the Russells with their home study process. Justin and Kate were able to finalize their adoption and bring their son home during the pandemic.



### Maine Children's Home

93 Silver Street, Waterville, ME, 04901 · 207-873-4253

info@mainechildrenshome.org · MaineChildrensHome.org



# FOR LEASE

## GREAT DOWNTOWN LOCATIONS

- COMPETITIVE LEASE TERMS
- PREMIUM RETAIL AND OFFICE SPACE
- MULTIPLE FLOOR PLAN OPTIONS
- PLENTY OF PARKING

**220 MAIN STREET, WATERVILLE**



**21 COLLEGE AVENUE, WATERVILLE**



**14 - 24 COMMON STREET,  
WATERVILLE  
ELEVATOR ACCESS**



**FOR MORE INFORMATION, CALL (207) 616-6881**



# **FOR LEASE**

## **PRIME LOCATIONS NEAR EXIT 127**

- **COMPETITIVE LEASE TERMS**
- **PREMIUM RETAIL AND OFFICE SPACE**
  - **3 PHASE POWER**
  - **PLENTY OF PARKING**

**350 KENNEDY MEMORIAL DRIVE, WATERVILLE**



**295 KENNEDY MEMORIAL DRIVE / PENNY HILL, WATERVILLE**



**FOR MORE INFORMATION, CALL (207) 616-6881**





*Baking*  
with *Danielle*

## Summer Baking Camp Schedule 2024

Summer camp classes are scheduled 10AM-1PM;  
three-five days per week.

**Week 1: June 24-26 Ages 8-11 (Short Week \$180)**

**Week 2: July 1-3: Ages 5-7 (Short Week \$180)**

**Week 3: July 8-12 Ages 8-11 (FULL Week \$295)**

**Week 4: July 15-18 Ages 5-7 (4 Day Week \$240)**

**Week 5: July 29-Aug. 1 Ages 8-11 (4 Day Week \$240)**

**Week 6: August 12-16 Ages 5-7 (FULL Week \$295)**

We begin the week baking simple cookies and finish  
the week off with the grand finale: a fancy,  
restaurant-style plated dessert with multiple  
components!

French Macarons are now included in four-five day camp weeks,  
however these cookies are made with almond flour...please reach  
out for a Plan B if your child has a tree nut allergy.





Each week will include a savory dish or two: kid-friendly taco cups, fancy grilled cheese, burger sliders, chicken parm, macaroni & cheese, quesadillas, homemade pasta with meatballs. We'll bake up at least one yeast dough each week to make items such as anadama rolls, focaccia with vegetable toppings, and pizza dough.

We will prepare many bakery treats and the menu may vary from week to week. Here are some examples: brownies, muffins, buttercream-frosted summer-themed sugar cookies, royal icing cookies, madeleines, fresh fruit tarts, galettes, cheesecakes, cupcakes, small layered cakes, summer fruit desserts, dessert shooters, chocolate & caramel sauces, fruit sauces, homemade ice cream sandwiches, ice cream sundaes, frozen yogurt popsicles and many garnishes.

A light lunch and/or snacks & bottled water is included daily. Students leave class each day with treats to share with their family!

Camps are \$180-\$295 per child per week. There is a 10% sibling discount. You may place a \$100 deposit to reserve your spot today with the balance due April 30.

Baking camp is fun, however, baking involves lots of math, science, and concentration. Please select the age group that is developmentally appropriate for your child. If your child is not able to follow directions or wait for directions, please register for two spots to include a support person.

*Please read: Summer Camp Cancellation Policy Revised 2/2024*

*Through April 30: Full Refund*

*May 1-May 15: \$50 cancellation fee then full refund*

*After May 15: Full payment will be forfeited*

Please register online at [bakingwithdanielle.com](http://bakingwithdanielle.com). Click on the Course Dates tab, then select camp week on the calendar. You may use FB pay, Venmo, PayPal or mail a check. All classes take place at 33 Temple St. in Waterville. Email [info@bakingwithdanielle.com](mailto:info@bakingwithdanielle.com) for more information.



## MIFF SPONSORSHIP PACKAGES

A combination of access, placement, recognition, and exclusivity provides a tailored package of benefits to meet your sponsorship goals. Integration into MIFF's print and digital materials, events, and programs maximize relevant and high-impact exposure while enhancing audience and guest experiences. The package options here may be customized to serve your marketing and placement strategy.

	PRESENTING \$25,000	VENUE \$5,000	DAY \$2,500
On-Screen Recognition	Logo		
Festival Posters	Logo		
Festival Print Ads (Newspaper/Magazine)	Logo		
Festival Brochure	Logo		
Festival Trailer	Logo		
Festival Signage at Event Venues	Logo	Logo	
Banner Placement at Festival	✓	✓	
Ad in Festival Program Guide	Full Page	Full Page	Half Page
Priority Ad Placement in Festival Program Guide	✓	✓	
Festival Website	Logo + Link	Logo + Link	Logo + Link
Inclusion in Press Releases	✓		
Announcement at Festival	Daily	Daily	Day of
Festival Program Guide Cover	Logo		
Festival Passes	Included	Included	Included
Individual Tickets	Included	Included	Included
Industry Exclusivity Within Sponsorship Level	✓	✓	
Volunteer Opportunity for Employees	✓	✓	✓
Access to Event Photos	✓	✓	✓

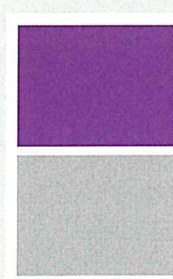
## MIFF ADVERTISING

Program Guide

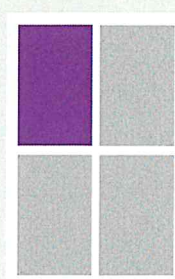
Full Page	\$750
Half Page	\$400
Quarter Page	\$225
On-Screen Static Ad	\$600
Adopt a Film	\$250



**FULL BLEED**  
6.25" w x 9.25" h  
(TRIM: 6" w x 9" h)



**HALF**  
5.5" w x 4.125" h



**QUARTER**  
2.625" w x 4.125" h



### CONTACT

Jordyn Woodard, Marketing + Development Coordinator  
ADS@WATERVILLECREATES.ORG

### WATERVILLE CREATES

93 Main Street, Waterville, Maine 04901  
207.873.7000 | watervillecreates.org



## ON-SCREEN ADVERTISING

We bring contemporary, independent, and classic film to central Maine with first-run screenings and the annual Maine International Film Festival, a 10-day celebration that attracts filmmakers and film lovers from around the world. Your business's visibility at the Maine Film Center provides awareness to a majority-local audience while raising awareness of your brand for patrons who travel to Waterville.

	Per Week	Per Year*
<b>Static Ad</b>	\$75	\$2,813
<b>Video Ad</b> (up to 30 sec)	\$150	\$5,625

\* 25% discount, excludes two weeks of MIFF

**More than  
3,600  
screenings across  
three screens  
every year**



### CONTACT

Jordyn Woodard, Marketing + Development Coordinator  
**ADS@WATERVILLECREATES.ORG**

### WATERVILLE CREATES

93 Main Street, Waterville, Maine 04901  
 207.873.7000 | [watervillecreates.org](http://watervillecreates.org)